



Suince
Group

Acoplamiento
Base del Motor
COUPLINGS, MOTOR BASE



TOLEDO

C/Río Jarama, 29, 45007 Toledo,

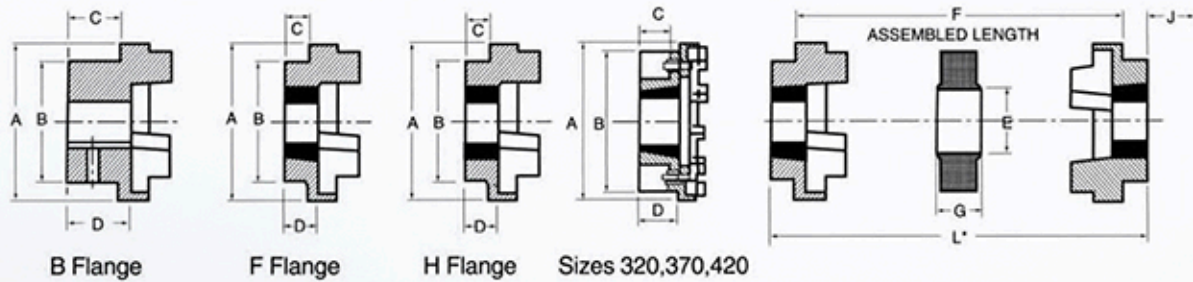
+34 925 231 451

MADRID

C/Mirlos, 5, 28320 Pinto

, +34 916 926 274

CRC Coupling



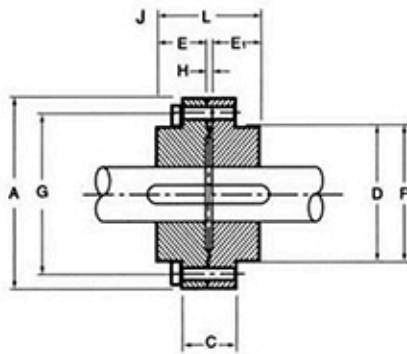
Physical Dimensions

Size	Bushing No.	A	B	E	F	G	Max. Bore		C	D	J
							mm	inch			
70 F	1008	69	60	31	25.0	18.0	25	1	20.0	23.75	29
70 H	1008	69	60	31	25.0	18.0	25	1	20.0	23.75	29
90 F	1108	85	70	32	30.5	22.5	28	1 1/8	19.5	23.25	29
90 H	1108	85	70	32	30.5	22.5	28	1 1/8	19.5	23.25	29
110 F	1210	112	100	45	45.0	29.0	42	1 5/8	18.5	26.75	38
110 H	1210	112	100	45	45.0	29.0	42	1 5/8	18.5	26.75	38
130 F	1610	130	105	50	53.0	36.0	42	1 5/8	18.0	26.50	38
130 H	1610	130	105	50	53.0	36.0	42	1 5/8	18.0	26.50	38
150 F	2012	150	115	62	60.0	40.0	50	2	23.5	33.50	42
150 H	2012	150	115	62	60.0	40.0	50	2	23.5	33.50	42
180 F	2517	180	125	77	73.0	49.0	60	2 1/2	34.5	46.50	48
180 H	2517	180	125	77	73.0	49.0	60	2 1/2	34.5	46.50	48
230 F	3020	225	155	99	85.5	59.5	75	3	39.5	52.50	55
230 H	3020	225	155	99	85.5	59.5	75	3	39.5	52.50	55
280 F	3535	275	185	119	105.5	74.5	90	3 1/2	74.0	90.00	67
280 H	3535	275	185	119	105.5	74.5	90	3 1/2	74.0	90.00	67

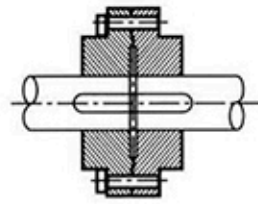
Size	Assembled Length (L*) FF, FH, HH	Weight kg	Inertia Mr ² kgm	Dynamic Stiffness Nm/*	Maximum Misalignment		Nominal torque Nm
					Parallel	Axial	
70	65.0	1.00	0.00085	-	0.3	+0.2	31
90	69.5	1.17	0.00115	-	0.3	+0.5	80
110	82.0	5.00	0.00400	65	0.3	+0.6	160
130	89.0	5.46	0.00780	130	0.4	+0.8	315
150	107.0	7.11	0.01810	175	0.4	+0.9	600
180	142.0	16.60	0.04340	229	0.4	+1.1	950
230	164.5	26.00	0.12068	587	0.5	+1.3	2000
280	207.5	55.30	0.44653	1025	0.5	+1.7	3150

**Tyre Coupling
Dimensions of Flanges B, F & H**

Size	Bush.	Max Bore		Types F & H		Type B		Screw	A	C	D	F	G	M1	
		mm	inch	L/E	J	L	E								
		F40 B		32											
F40 F		25			29	33.0	22	M5	104	82					11.0
F40 H	1008	25	1	33 / 22	29				104	82					11.0
F50 B	1008	38	1	33 / 22	29				133	100	79				12.5
F50 F		32			38	45.0	32	M5	133	100	79				12.5
F50 H	1210	32	1 1/4	38 / 25	38				133	100	79				12.5
F60 B	1210	45	1 1/4	38 / 25	38				165	125	70				16.5
F60 F		42			38	55.0	38	M6	165	125	70				16.5
F60 H	1610	42	1 1/4	42 / 25	38				165	125	70				16.5
F70 B	1610	50	1 1/4	42 / 25	38				187	144	80	50	13		11.5
F70 F		50				47.0	35		187	144	80	50	13		11.5
F70 H	2012	42	2	44 / 32	42			M10	187	144	80	50	13		11.5
F80 B	1610	60	1 1/4	42 / 25	38				211	167	97	54	16		12.5
F80 F		60				55.0	42	M10	211	167	95	54	16		12.5
F80 H	2517	50	2 1/2	58 / 45	48				211	167	97	54	16		12.5
F90 B	2012	70	2 1/4	45 / 32	32				235	188	112	60	16		13.5
F90 F		60				63.5	49	M12	235	188	108	60	16		13.5
F90 H	2517	60	2 1/4	59.5/45	48				235	188	108	60	16		13.5
F100 B	2517	80	2 1/4	59.5/45	48				254	216	125	62	16		13.5
F100 F		75				70.5	56	M12	254	216	120	62	16		13.5
F100 H	3020	60	3"	65.5/51	55				254	216	113	62	16		13.5
F110 B	2517	90	2"	59.5/45	48				279	233	128	62	16		12.5
F110 F		75				75.5	63	M12	279	233	134	62	16		12.5
F110 H	3020	75	3"	63.5/51	55				279	233	134	62	16		12.5
F120 B	3020	100	3"	63.5/51	55				314	264	143	67	16		14.5
F120 F		100				84.5	70	M16	314	264	140	67	16		14.5
F120 H	3525	75	4"	79.5/65	67				314	264	140	67	16		14.5
F140 B	3020	130	3"	65.5.51	55				359	311	178	73	17		16.0
F140 F		100				110.5	94	M20	359	311	178	73	17		16.0
F140 H	3525	100	4"	81.5/65	67				359	311	178	73	17		16.0
F160 B	3525	110	4"	81.5/65	67				402	345	187	78	19		15.0
F160 F		115				117.0	102	M20	402	345	187	78	19		15.0
F160 H	4030	115	4"	92 / 77	80				402	345	187	78	19		15.0
F180 B	4030	150	4"	92 / 77	80				470	398	200	94	19		23.0
F180 F		125				137.0	114	M20	470	398	205	94	19		23.0
F180 H	4535	125	5"	112 / 89	89				470	398	205	94	19		23.0
F200 B	4535	150	5"	112 / 89	89				508	429	200	103	19		24.0
F200 F		125				138.0	114	M20	508	429	205	103	19		24.0
F200 H	4535	125	5"	113 / 89	89				508	429	205	103	19		24.0
F220 B		160				154.5	127	M20	562	474	218	118	20		27.5
F220 F	5040	125	5"	129.5/102	92				562	474	223	118	20		27.5
F220 H	5040	125	5"	129.5/102	92				562	474	223	118	20		27.5
F250 B		190				154.5	132	M20	628	532	125	125	25		29.0



Coupling Assembly HF



Coupling Assembly FF

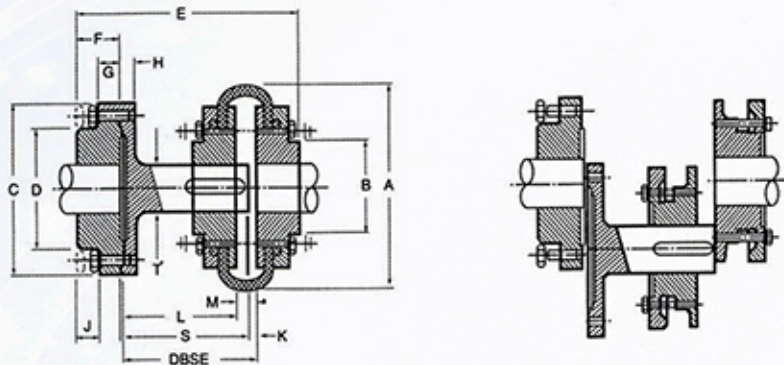
Dimensions sheet:

Size	Bush.	Max.Bore		A	C	D	E	F nom.	G nom.	H+	J*	L	Weight kg
		mm	Inch										
RM12	1210	32	1 1/4"	118	35	83	26	76	102	7	38	57	3.50
RM16	1615	42	1 5/8"	127	43	80	38	89	105	7	38	83	4.50
RM25	2517	60	2 1/2"	178	51	123	45	127	149	7	48	97	11.00
RM30	3030	75	3"	216	65	146	76	152	181	7	54	169	23.00
RM35	3535	90	3 1/2"	248	75	178	89	178	213	7	67	185	38.00
RM40	4040	100	4"	298	76	210	102	216	257	7	79	210	64.00
RM45	4545	110	4 1/2"	330	86	230	114	241	286	7	89	235	88.00
RM50	5050	125	5"	362	92	266	127	267	314	7	92	260	155.0

Size	Mountings	Bush.	Max.Bore		A	C	D	E	F nom.	G nom.	H	J	L	Weight kg
			mm	Inch										
RM12	F	1210	32	1 1/4"	118	35	83	26	76	102	7	38	57	3.5
RM12	H	1210	32	1 1/4"	118	35	83	26	76	102	7	38	57	3.5
RM16	F	1615	42	1 5/8"	127	43	80	38	89	105	7	38	83	4.5
RM16	H	1615	42	1 5/8"	127	43	80	38	89	105	7	38	83	4.5
RM25	F	2517	60	2 1/2"	178	51	123	45	127	149	7	48	97	11.0
RM25	H	2517	60	2 1/2"	178	51	123	45	127	149	7	48	97	11.0
RM30	F	3030	75	3	216	65	146	76	152	181	7	54	159	23.0
RM30	H	3030	75	3	216	65	146	76	152	181	7	54	159	23.0
RM35	F	3535	90	3 1/2"	248	75	178	89	178	213	7	67	185	38.0
RM35	H	3535	90	3 1/2"	248	75	178	89	178	213	7	67	185	38.0
RM40	F	4040	100	4	298	76	210	102	216	257	7	79	210	64.0
RM40	H	4040	100	4	298	76	210	102	216	257	7	79	210	64.0
RM45	F	4545	110	4 1/2"	330	86	230	114	241	286	7	89	235	88.0
RM45	H	4545	110	4 1/2"	330	86	230	114	241	286	7	89	235	88.0
RM50	F	5050	125	5	362	92	266	127	267	314	7	92	260	155.0

Spacer Couplings for taper bushes

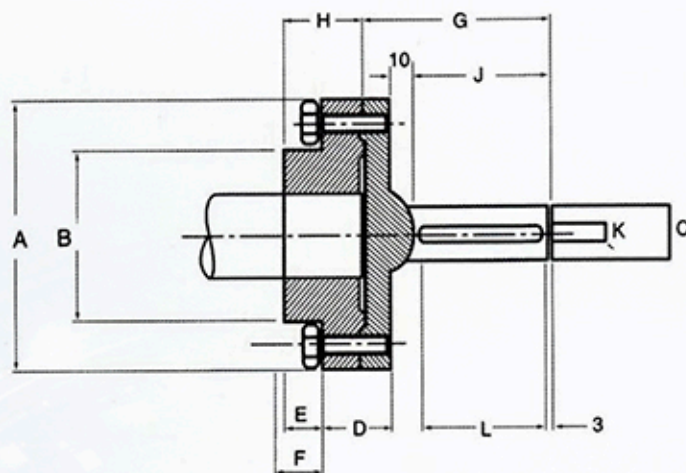
Size	Distance between Shaft Ends(mm)													
	SM12		SM16		SM25			SM30		SM35				
	80(100)	100	140	100	140	180	140	180	140	180	140	180		
	Min/Max	Min	Max	Min/Max	Min/Max	Min/Max	Min/Max	Min	Max	Min	Max	Min	Max	Min/Max
F40	80	100	113	140/150										
F50		100	116	140/156										
F60		100	124	140/164										
F70				100/114	140/154	180/194								
F80				100/117	140/157	180/197								
F90				140/168		180/198								
F100								140	158	180	198			
F110								140	156	180	196			
F120												140	160	180/
F140												140	163	180/



Spacer Couplings dimensions

Spacer	No(T) D66	Bush.	Max. bore mm-	Tyre Bush	Max bore mm-inch	A	B/C	D/E	F/G	H/J	K/L	M	S/T
SM12	80	F40	1210	1008	32 - 1 1/4"	25 - 1"	104	82/118	83/134	25 / 14	15 / 14	6 / 66	22 / 77 / 25
SM12	100	F40					83/140	22 / 77	22 / 77 / 25				
SM16	100	F40*	1615	1008	25 - 1"	104	82/127	80/170	38 / 18	15 / 14	9 / 68	22 / 94 / 32	
SM16	140	F40*						80/200			9 / 126	22 / 94 / 32	
SM16	100	F50	1615	1210	42 - 1-3/8"	133	79/127	80/173	38 / 18	15 / 14	9 / 85	25 / 94 / 32	
SM16	140	F50						80/213			9 / 125	23 / 134 / 32	
SM16	100	F60	1610	1610	42 - 1 5/8"	166	70/127	80/174			9 / 75	37 / 94 / 32	
SM16	140	F60						80/214			9 / 118	25 / 134 / 32	
SM25	100	F80	2517	2517	60 - 2 1/7"	211	95/178	123/193	45 / 22	16 / 14	9 / 78	25 / 94 / 48	
SM25	140	F80						123/233			9 / 116	25 / 134 / 48	
SM25	180	F80	2517	2517	60 - 2 1/7"	235	108/178	123/273	45 / 22	16 / 14	9 / 158	25 / 174 / 48	
SM25	140	F90						123/233			9 / 116	27 / 134 / 48	
SM25	180	F90	2517	2517	60 - 2 1/7"	235	108/178	123/273	45 / 22	16 / 14	9 / 116	27 / 174 / 48	
SM25	140	F90						123/273			9 / 116	27 / 174 / 48	
SM30	140	F100	3030	3020	75 - 3"	254	120/216	146/270	76 / 29	20 / 17	9 / 116	27 / 134 / 60	
SM30	190	F100						146/310			9 / 156	27 / 174 / 60	
SM30	140	F110	3030	3020	75 - 3"	279	134/216	146/370	76 / 29	20 / 17	9 / 118	25 / 134 / 60	
SM30	180	F110						146/310			9 / 158	25 / 174 / 60	
SM35	140	F140	3535	3525	90 - 3 1/7"	359	178/248	178/296	89 / 31	20 / 17	9 / 111	32 / 134 / 80	
SM35	180	F140						178/337			9 / 151	32 / 174 / 80	

Spacer Couplings for taper bushes

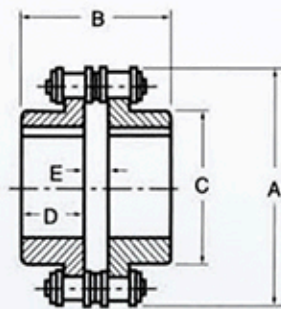


Spacer Coupling

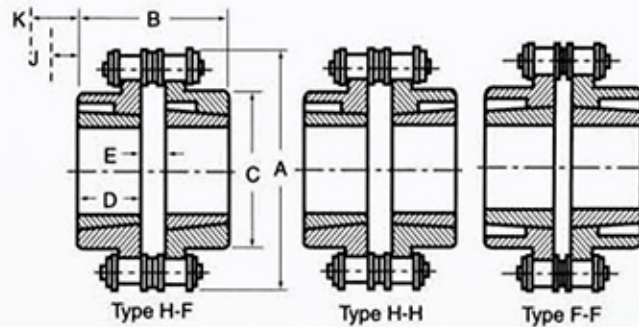
Spacer Flanges dimensions

Size	Xmin	Bush.	Max Bore	A	B	C	D	E	F	G	H	J+	K	L	
SM16	100	1615	42	127	80	32	33	20	25	91	41	69	10	65	
	140									131		109			
SM25	100	2517	60	178	127	48	38	23	27	91	48	68	14	66	
	140									131		108			72
	180									171		148			72
SM30	140	3030	75	216	146	60	49	47	34	131	79	104	18	72	
	180								171	144		80			
SM35	140	3535	90	248	178	80	55	54	34	131	92	104	22	90	
	180								171	144		100			

Chain Coupling



Straight Bore Chain Coupling



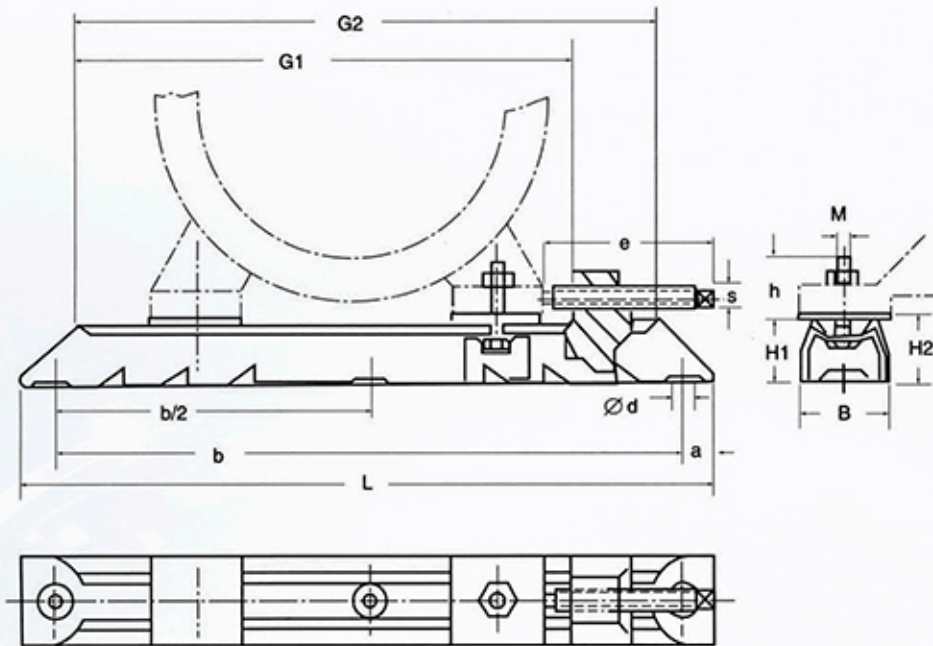
Taper-lock Chain Coupling

Coupling	Straight Bore		Taper-Lock			Max RPM		Weight (Lbs.)	
	Min	Max	Bush.	Min.	Max.	Without cover	With Cover	Str.	TL
4012	1/2	7/8	-	-	-	875	5000	2.2	-
4016	5/8	1 5/16	1108	1/2	1 1/8	875	5000	3.8	2.7
5012	5/8	1 1/8	-	-	-	875	5000	3.1	-
5016	5/8	1 11/16	-	-	-	800	4000	5.0	-
5018	3/4	2	1610	1/2	1 11/16	800	4000	6.0	6
6018	1	2 7/16	-	-	-	675	3000	9.9	-
6020	1 1/8	2 3/4	2012	1/2	2 1/8	675	3000	12.3	12.7
8018	1 1/8	3 1/8	-	-	-	500	2000	31.1	-
8020	1 1/8	3 9/16	3020	7/8	3 1/4	500	2000	33.5	31.1
10020	2	4 5/8	3535	1 3/16	3 15/16	450	1800	80.0	77.9
12018	2	4 11/16	-	-	-	400	1600	110.0	-
12020	-	-	4040	1 7/16	4 7/16	400	1600	-	135

Dimensions sheet:

Coupling	A	B		C	D		E		K(2)	J(3)
		Str	T-L		Str	T-L	Str	T-L		
4012	2.41	2.53	-	1.41	1.13	-	0.28	-	-	-
4016	3.03	2.53	1.94	1.97	1.13	0.88	0.28	0.19	0.75	0.63
5012	3.00	2.88	-	1.75	1.25	-	0.38	-	-	-
5016	3.91	2.88	-	2.50	1.44	-	0.38	-	-	-
5018	4.19	2.88	2.31	2.97	1.69	1.00	0.38	0.31	1.06	0.41
6018	5.00	3.47	-	3.50	1.88	-	0.47	-	-	-
6020	5.50	3.47	2.94	3.88	2.00	1.25	0.47	0.44	1.38	0.94
8018	6.66	4.59	-	4.56	2.38	-	0.59	-	-	-
8020	7.30	4.59	4.50	5.38	2.63	2.00	0.59	0.50	2.06	1.19
10020	9.13	6.97	7.63	6.72	3.13	3.50	0.72	0.63	2.34	1.31
12018	10.00	7.88	-	6.75	3.50	-	0.86	-	-	-
12020	10.94	-	8.75	7.75	-	4.00	-	0.75	3.38	1.63

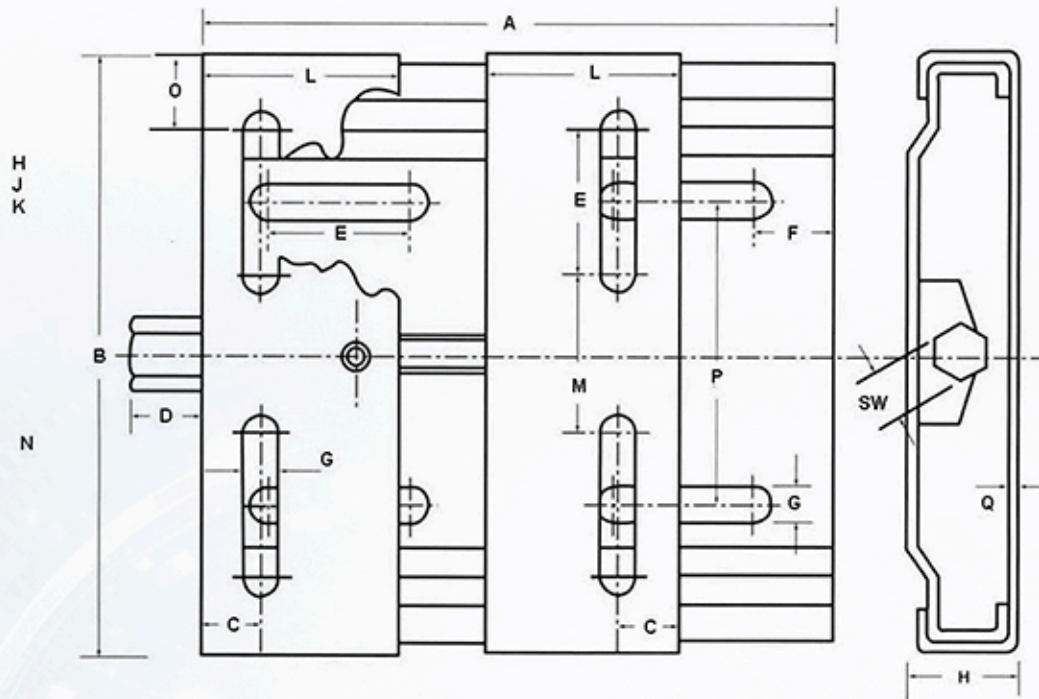
Motor rails



Dimensions sheet:

Type	L	G1	Motor	MXh	exs	G2	a	b	b/2	φd	B	H1	H2	Wt.(kg)
With movable blocks														
312/6	312	240	63/71	M6X19	75X6	262	16	280	-	12	40	28	30	1.4
312/8	312	240	80/90	M8X27	75X6	262	16	280	-	12	40	28	30	1.5
375/6	375	305	63/71	M6X19	75X6	325	16	343	-	12	40	28	30	1.5
375/8	375	305	80/90	M8X27	75X6	325	16	343	-	12	40	28	30	1.6
375/10	375	305	100/112	M10X32	75X6	325	16	343	-	12	40	28	30	1.6
395/8	395	302	80/90	M8X28	97X8	325	20	355	-	12	50	40	43	3.4
395/10	395	302	100/112	M10X35	97X8	325	20	355	-	12	50	40	43	3.4
495/8	495	405	80/90	M8X29	97X8	425	20	455	-	12	50	40	43	4.0
495/10	495	405	100/112/132	M10X35	97X8	425	20	455	-	12	50	40	43	4.0
495/12	495	405	160	M12X49	97X8	425	20	455	-	12	50	40	43	4.0
530/10	530	413	132	M10X37	119X9	442	25	480	-	14	60	50	54	6.4
530/12	530	413	160	M12X49	119X9	442	25	480	-	14	60	50	54	6.4
630/10	630	515	132	M10X37	119X9	542	25	580	-	14	60	50	54	8.2
630/12	630	515	160/180	M12X45	119X9	542	25	580	-	14	60	50	54	8.2
686/12	686	538	160/180	M12X43	154X12	575	28	630	315	18	75	60	64	12.8
686/16	686	538	200/225	M16X62	154X12	575	28	630	315	18	75	60	64	12.8
With welded blocks														
864/16	864	700	200/225	M16X60	300X16	810	32	800	400	24	90	75	-	16.6
864/20	864	700	250/280	M20X68	300X16	810	32	800	400	24	90	75	-	16.6
1072/20	1072	865	250/280	M20X77	360X19	995	36	1000	500	30	112	100	-	33.4
1072/24	1072	865	315	M24X88	360X19	995	36	1000	500	30	112	100	-	33.5
1330/24	1330	1065	315/355	M24X95	430X21	1215	40	1250	625	30	130	125	-	56.6

Plate type motor bases

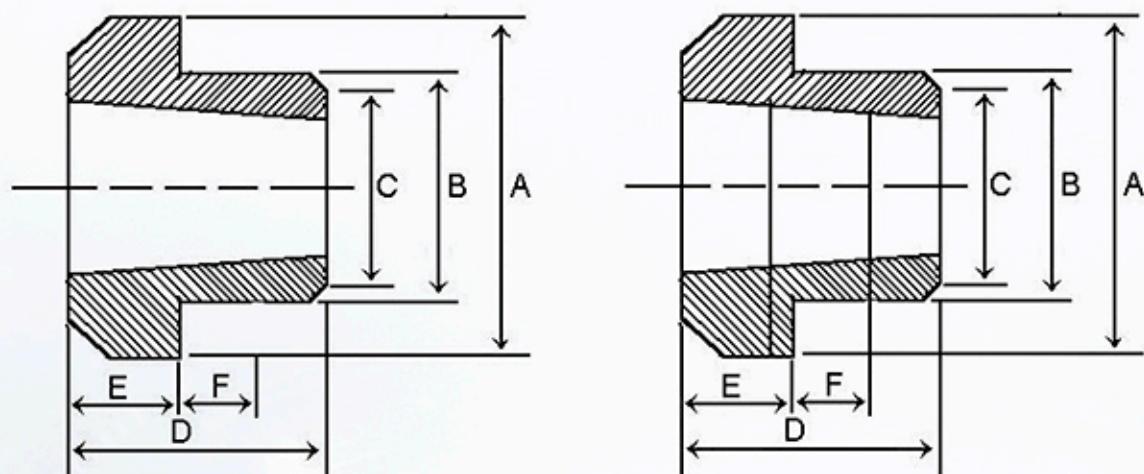


Dimensions sheets

Type-A	B	C	D	E	F	G	H	L	M	O	P	SW	Q	Wt.kg
210	195	20	24	50.0	25	10.5	33	70	43	26	98	19	3	2.6
270	195	20	24	50.0	25	10.5	33	70	43	26	98	19	3	3.0
307	213	20	24	50.0	25	10.5	33	70	65	24	108	19	3	3.2
340	290	27	27	62.0	30	12.5	40	95	90	38	165	22	4	6.3
380	240	27	24	43.0	30	12	33	95	96	29	160	22	4	4.5
430	290	27	27	62.0	29	12.5	40	95	90	38	165	22	4	7.5
450	350	40	24	55.0	30	15	40	125	174	33	225	22	4	9.7
490	410	40	27	60.0	30	15.0	40	95	193	48.5	284	22	4	10.8

Type	Installation size										G.W. (kg)	
	63	71	80	90	100	112	132	160	180			
210	70	85										2.2
210			45									2.2
270	130	118										2.8
270			105	90								2.8
340				146								7.0
340					126	96	70					7.0
430				236								7.5
430					216	186	160					7.5
430								122				7.5
490								156	131			10.8

Taper bored weld on hubs



W Weld on hubs

WH Weld on hubs

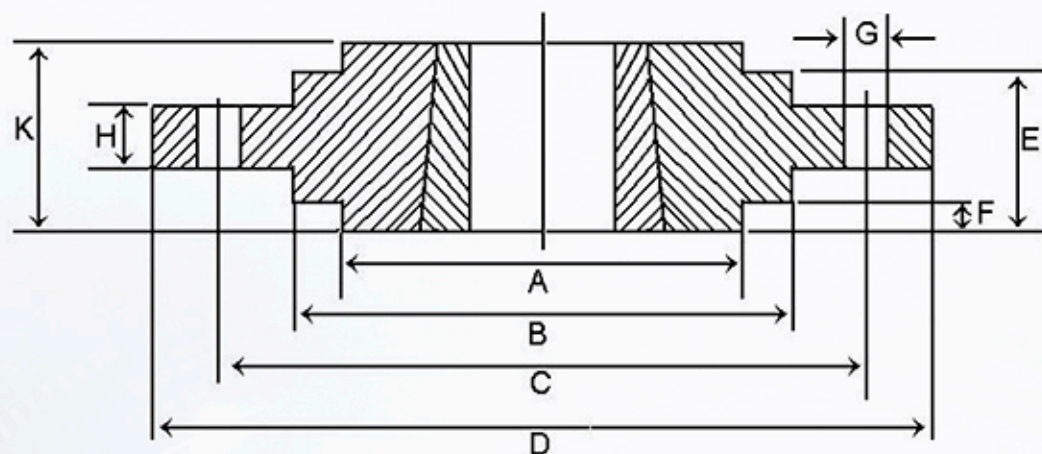
W type taper bore Weld-on hubs W

Hub Size	A	B	C	D	E	F
W12 1215	73.03	63.50	62.71	38.10	15.88	9.53
W16 1615	82.55	73.03	72.74	38.10	15.88	9.53
W20 2017	101.60	88.90	88.11	44.45	19.05	14.45
W25 2517	127.00	111.13	110.34	44.45	19.05	14.45
W30 3030	149.86	133.35	132.56	76.20	25.40	19.05
W35 3535	184.15	158.75	157.96	88.90	31.75	25.40
W40 4040	225.43	196.85	196.06	101.60	31.75	31.75
W45 4545	254.00	222.25	221.46	114.30	38.10	38.10

WH type taper bore Weld-on hubs WH

Hub Size	A	B	C	D	E	F
WH12 1210	70	65	64.5	25	9	10
WH16-1 1610	80	75	74.5	25	9	10
WH20 2012	95	90	89.5	32	12	12
WH25 2517	115	110	109.5	44	19	15
WH30-2 3020	145	140	139.5	50	20	15
WH35 3525	190	180	179.5	65	25	25
WH40 4040	200	190	189.5	101	32	30
WH45 4545	210	200	199.5	114	40	30
WH50 5050	230	220	219.5	127	40	45

Taper bored bolt on hubs



Large type SM hubs (SM):

Hub Size	Bushes bore	A	B	C(h9)	D	E	F	G	H	Screw hole
SM-12 1210	11-32mm	180	135	90	75	25	6.5	2.5	11.5	φ7.5 X 6
SM-16 1615	14-42mm	200	150	110	85	38	7.5	2.5	12.5	φ7.5 X 6
SM-20 2012	14-50mm	270	190	140	110	32	8.5	2.5	13.5	φ7.5 X 6
SM-25 2517	16-60mm	340	240	170	125	45	9.5	2.5	14.5	φ11.5 X 8
SM-30-1 3020	25-75mm	430	300	220	160	51	13.5	2.5	18.5	φ13.5 X 8
SM-30-2 3020	25-75mm	485	340	250	160	51	13.5	2.5	18.5	φ13.5 X 8

Small type SM hubs (SM):

Hub Size	Bushes bore	A	B	C(h9)	D	E	F	G	H	Screw hole
SM-12 1210	11-32mm	120	100	80	75	25	6.5	2.5	11.5	φ7.5 X 8
SM-16 1610	14-42mm	130	110	90	85	25	7.5	2.5	12.5	φ7.5 X 8
SM-20 2012	14-50mm	145	125	115	110	32	8.5	2.5	13.5	φ7.5 X 8
SM-25 2517	16-60mm	185	155	130	125	45	9.5	2.5	14.5	φ11.5 X 8
SM-30 3020	25-75mm	220	190	160	160	51	13.5	2.5	18.5	φ13.5 X 8